

Figure 1 Overv. v

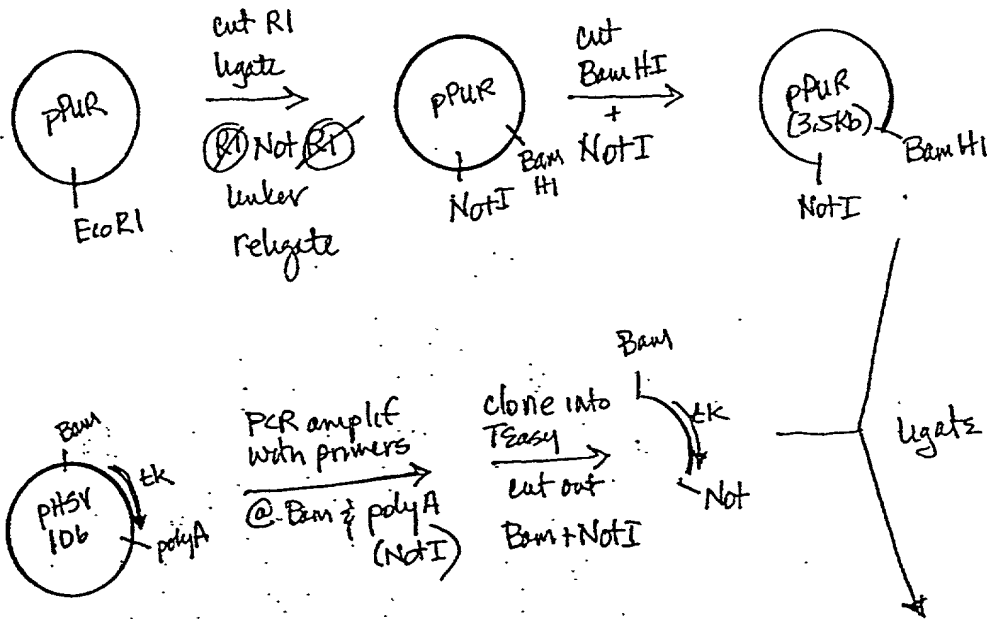
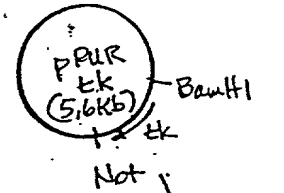


Figure 1a



4.1 Kb Bam fragment ($\alpha 3'$) locus (MUSTCRA)

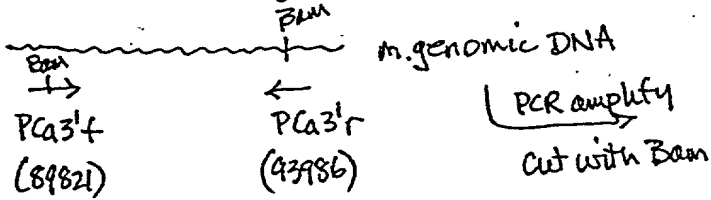


Figure 1b

Figure 1c

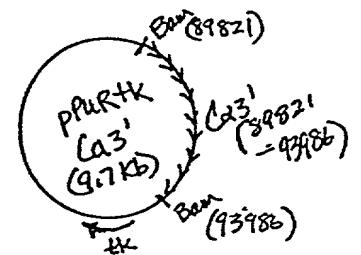
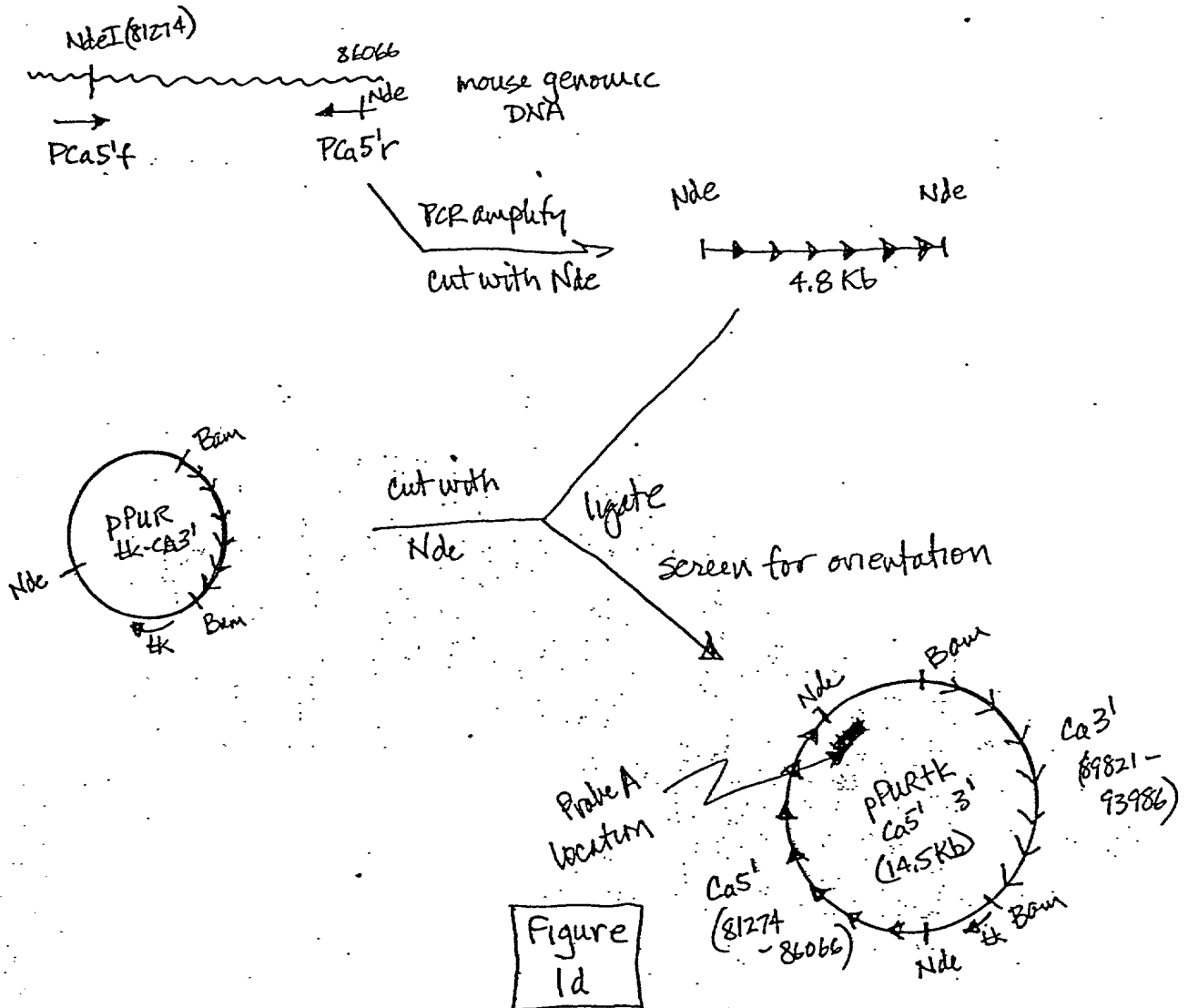


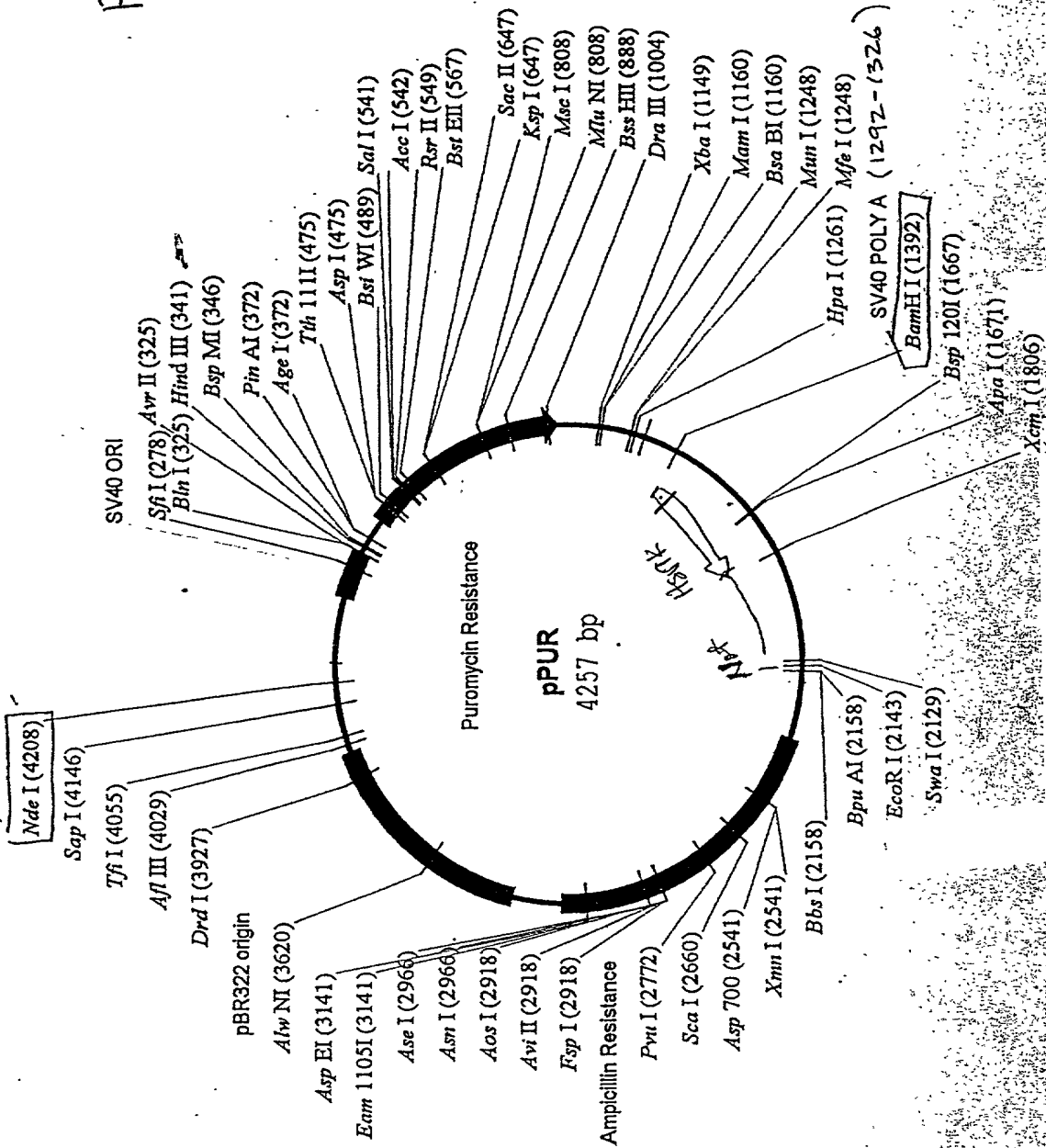
Figure 1 overview Cont.

4.8 Kb NdeI fragment (Cas1) locus MUSTCRA



FOSTER SHOOT

Fig. 1E



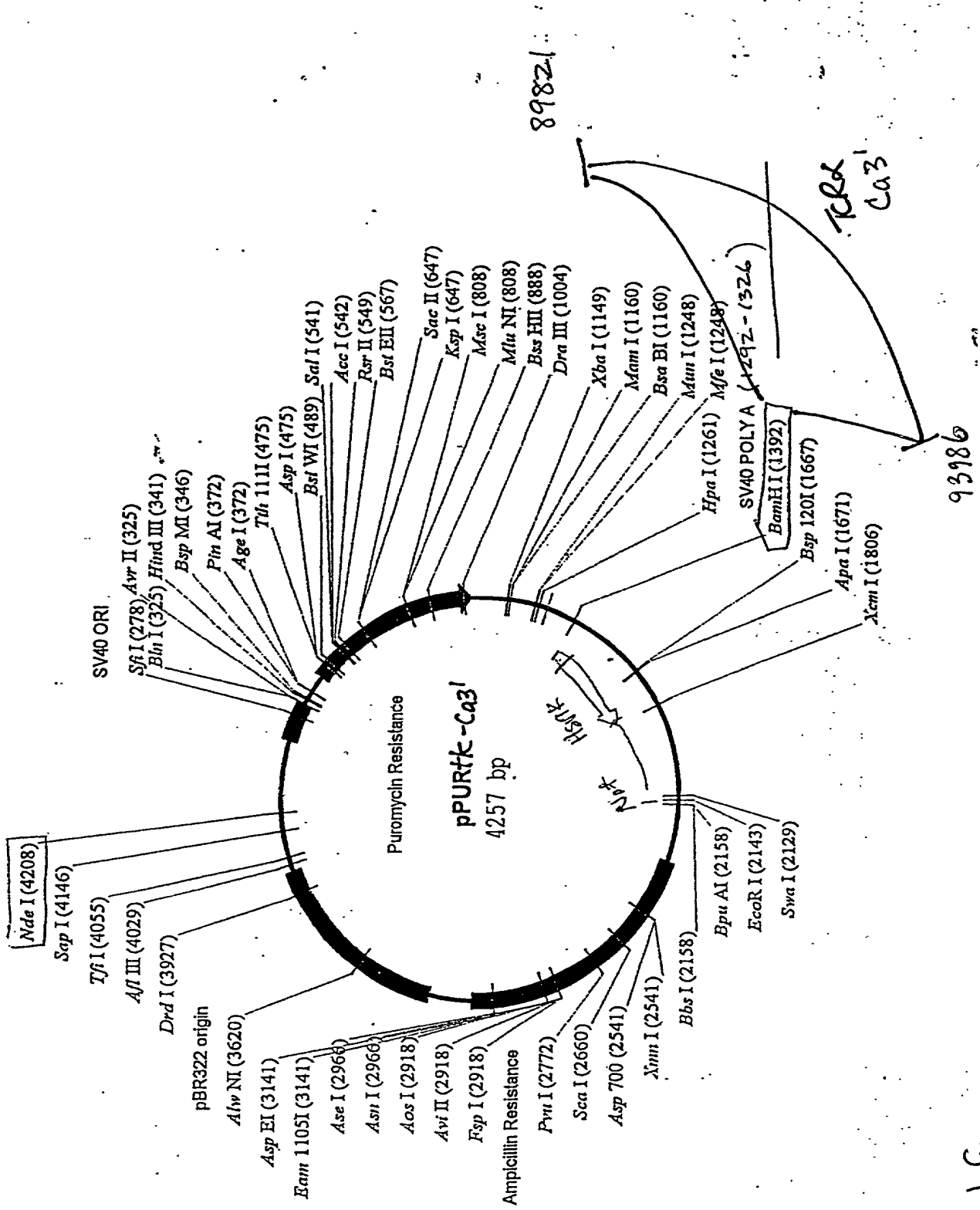


Fig. 1 G

TOPT "SHOOT"

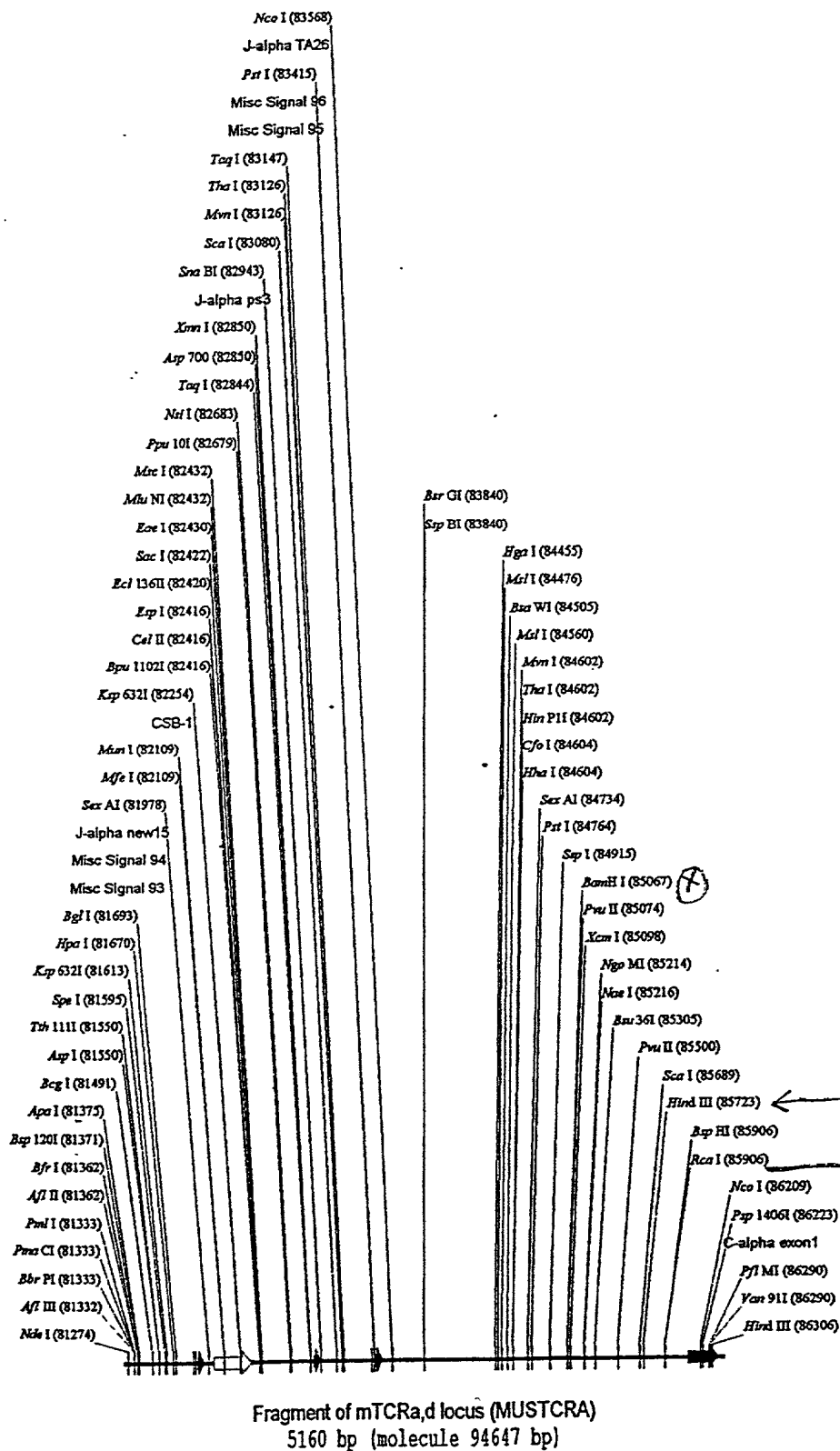


Fig. 1 I

Figure 2 Overview

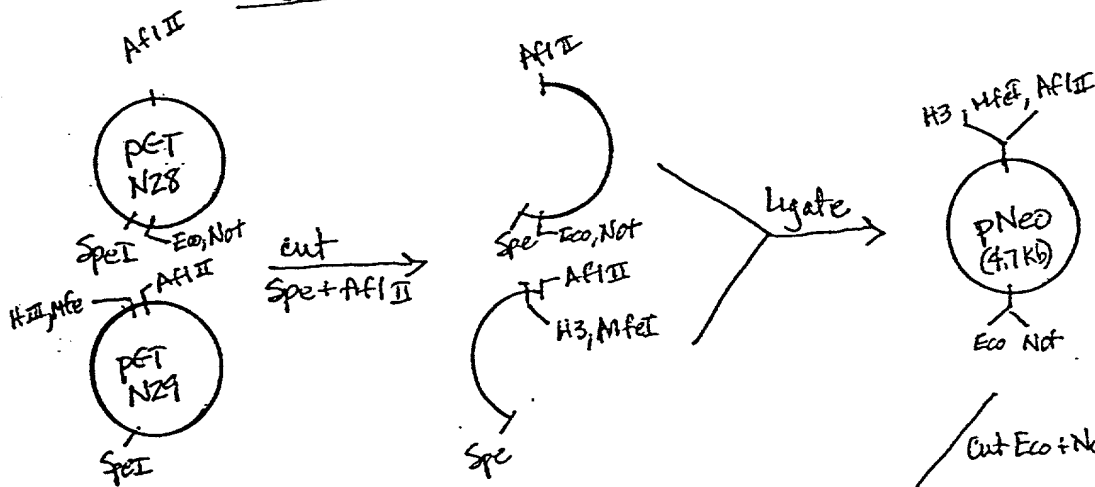


Figure 2d

Fragment of mTcr beta locus 3'

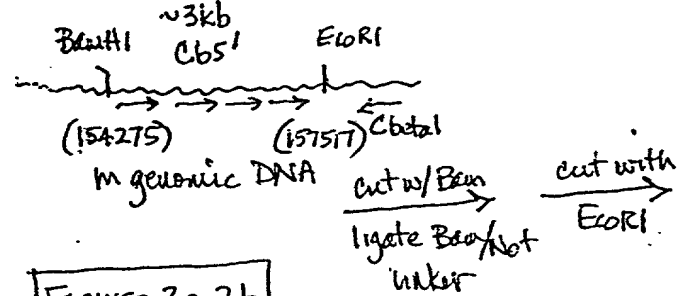


Figure 2a, 2b

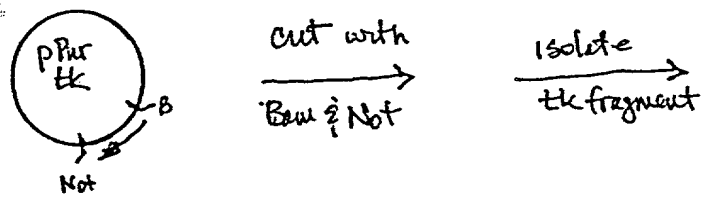


Figure 1a

Fragment of mTcr beta locus 3'

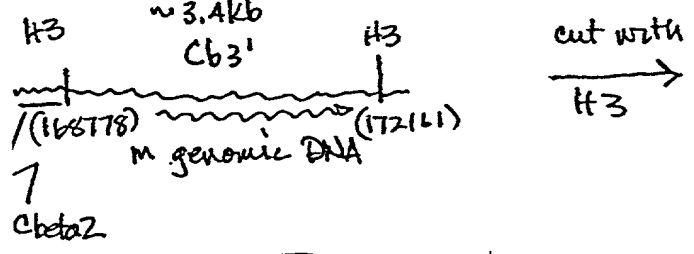


Figure 2a, 2c

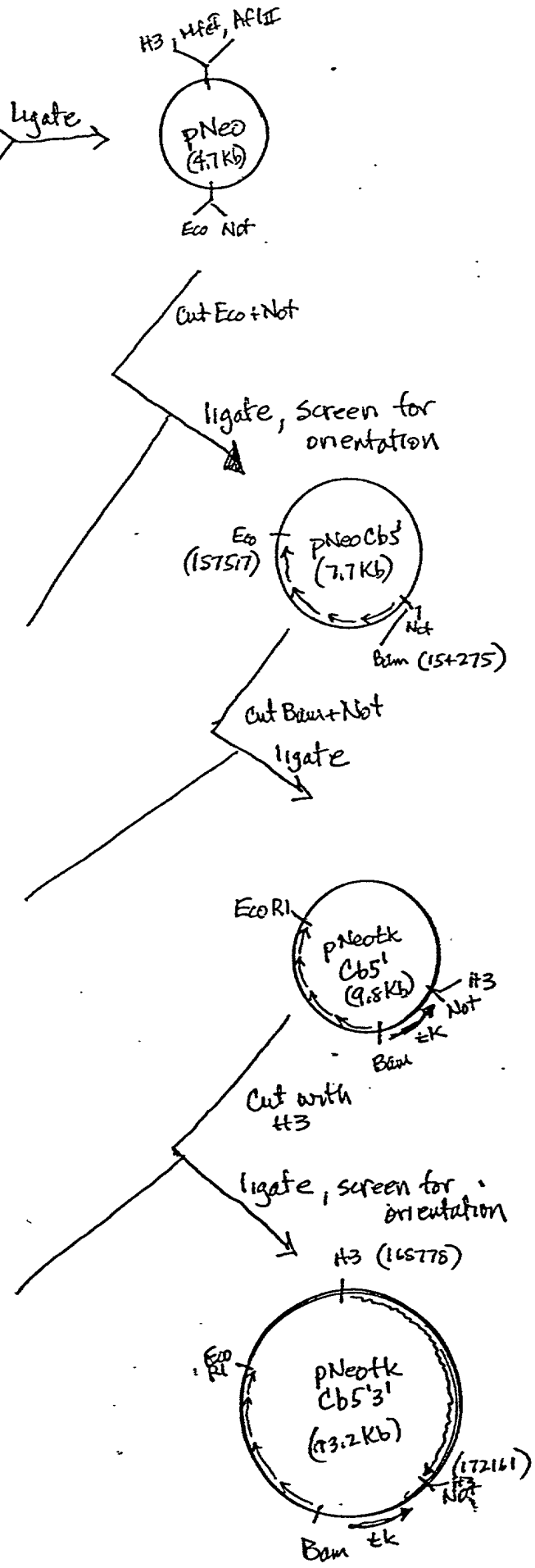
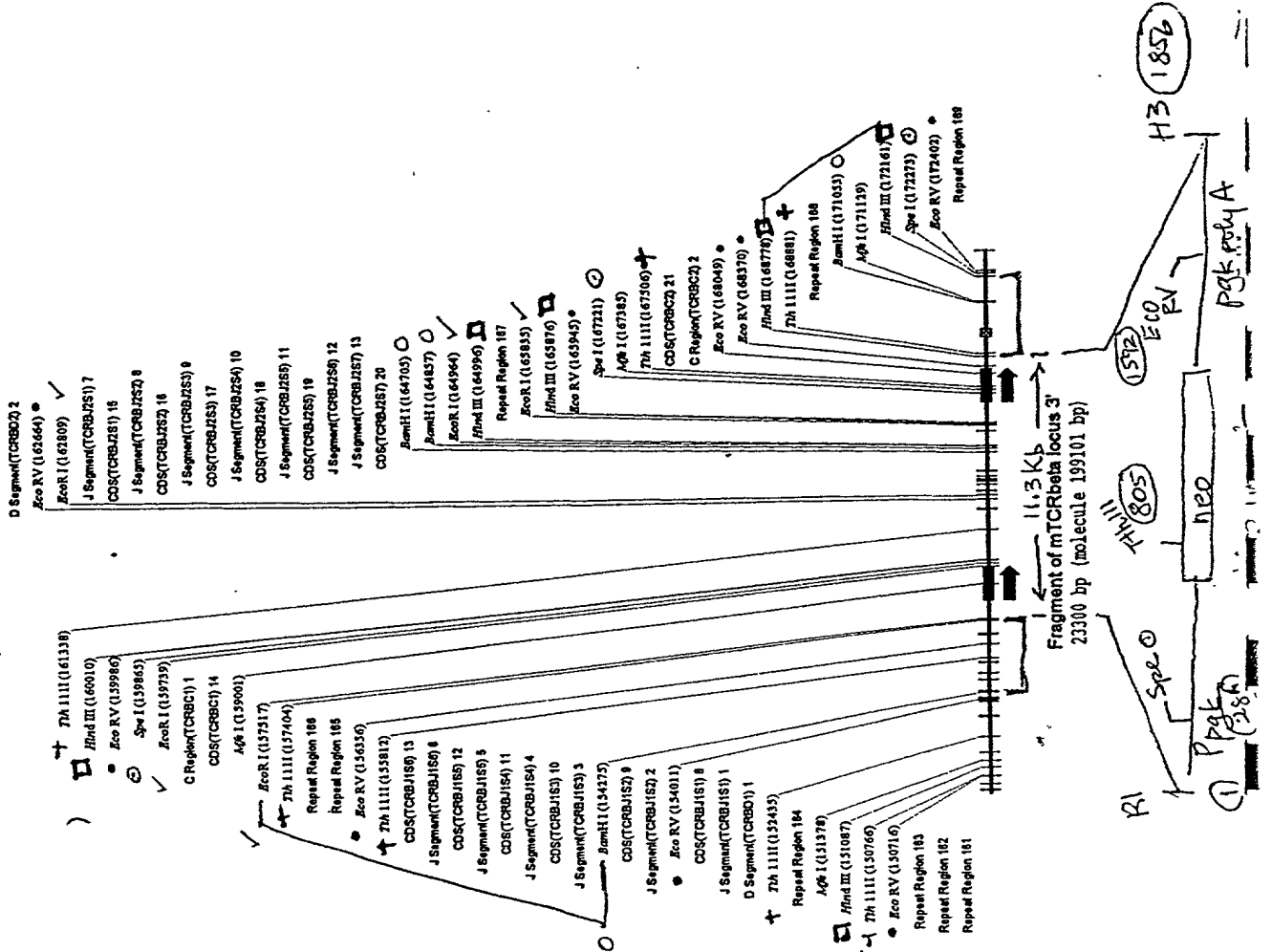


Fig 2a



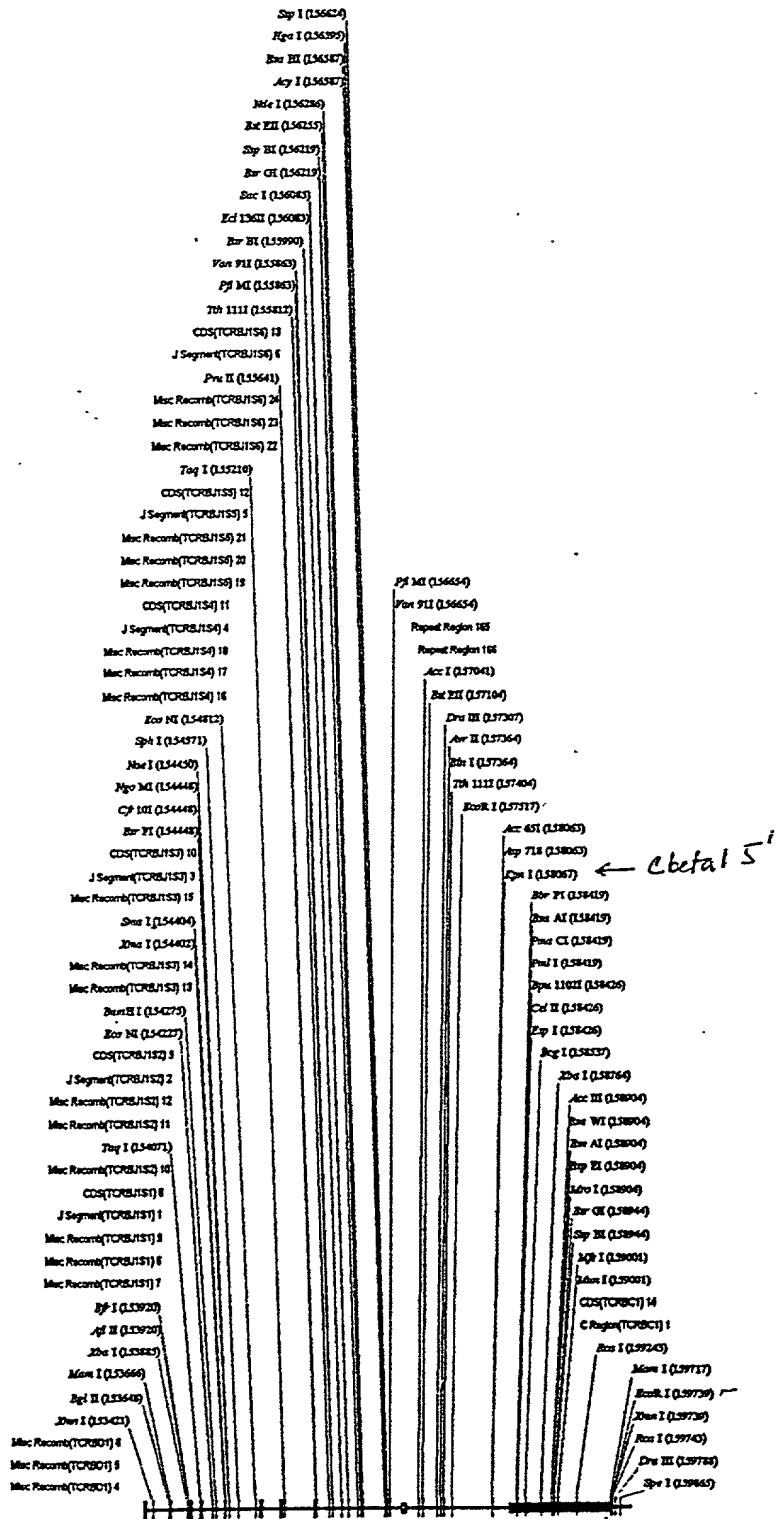
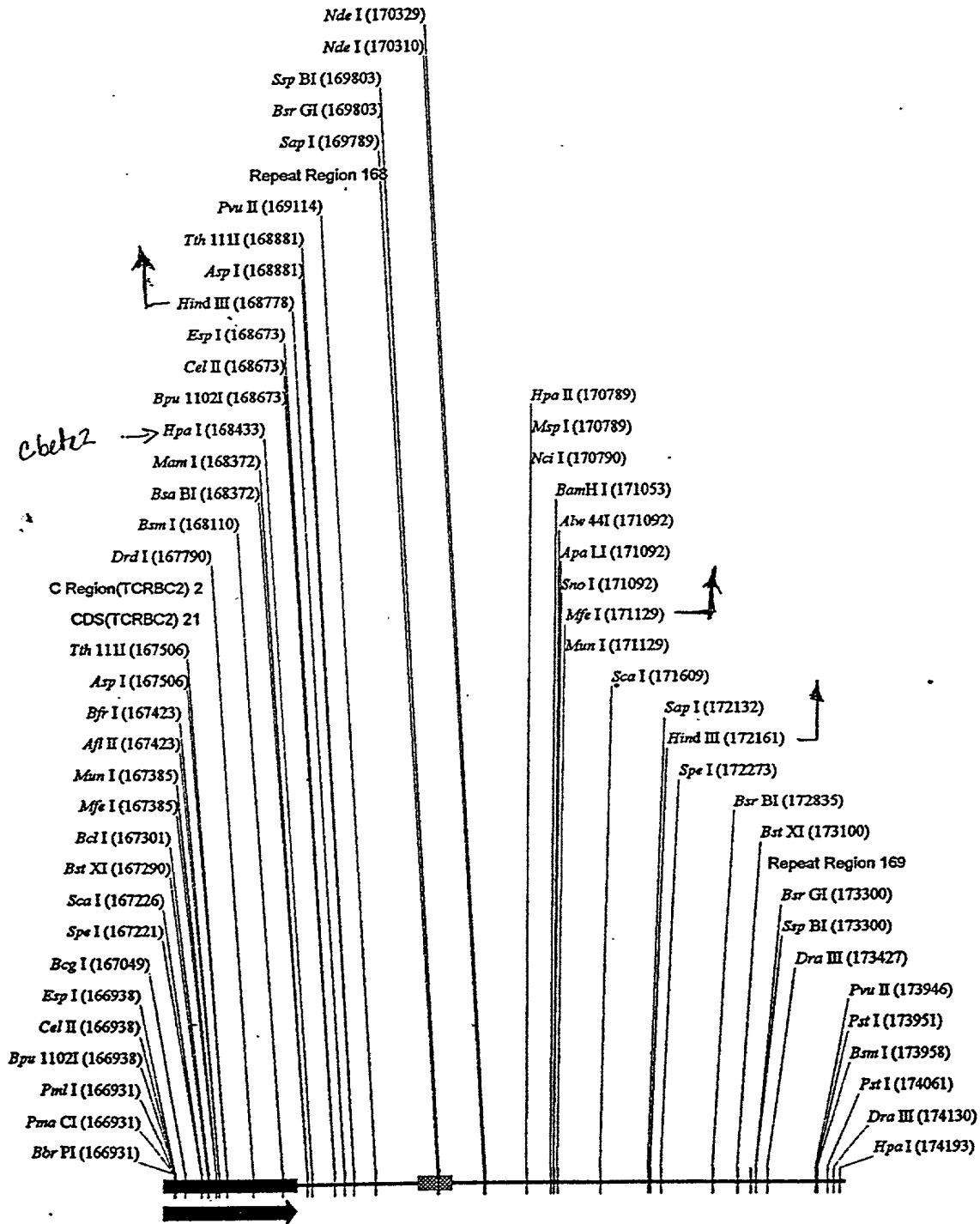


Fig. 26



Fragment of mTCRβ locus 3'
7439 bp (molecule 199101 bp)

Fig. 2c

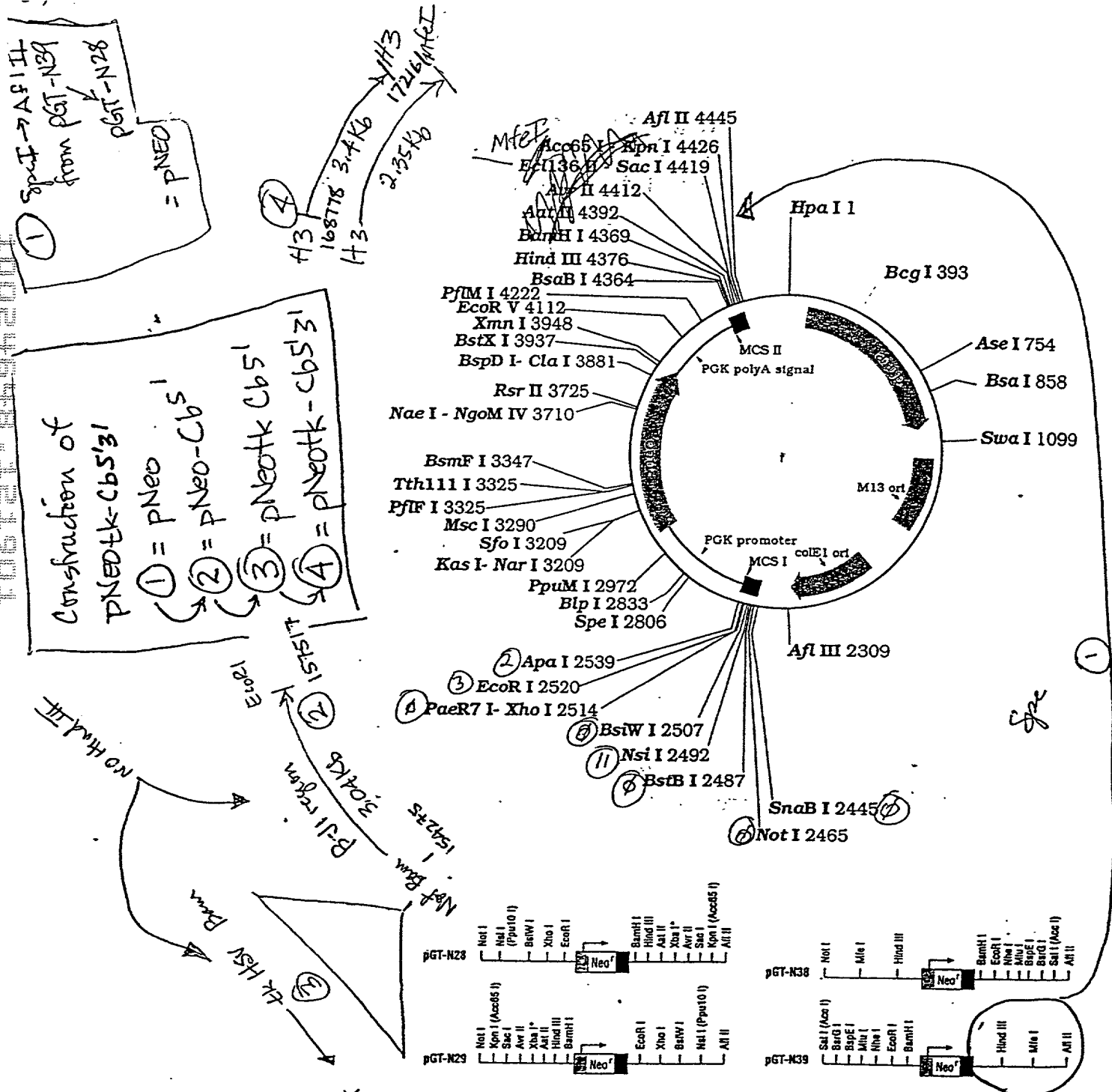
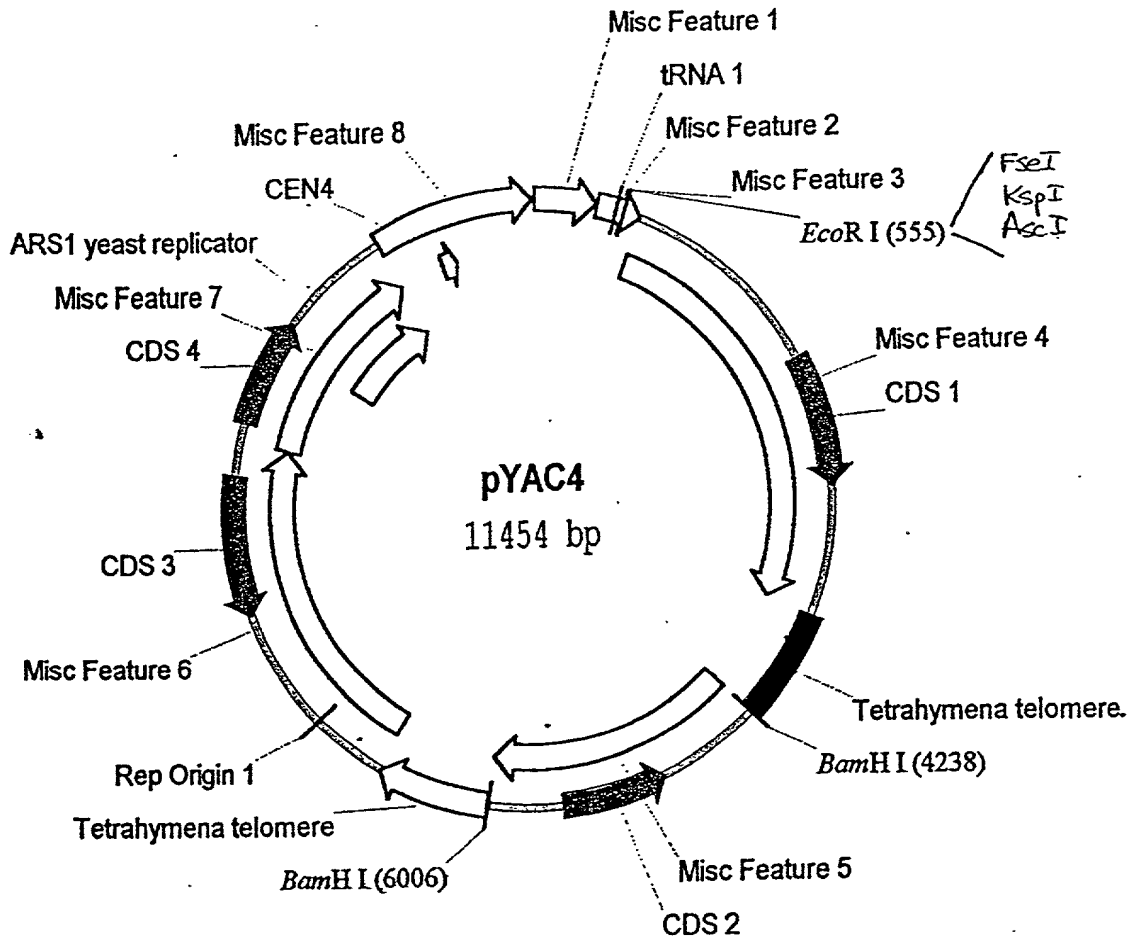


Fig. 2d.

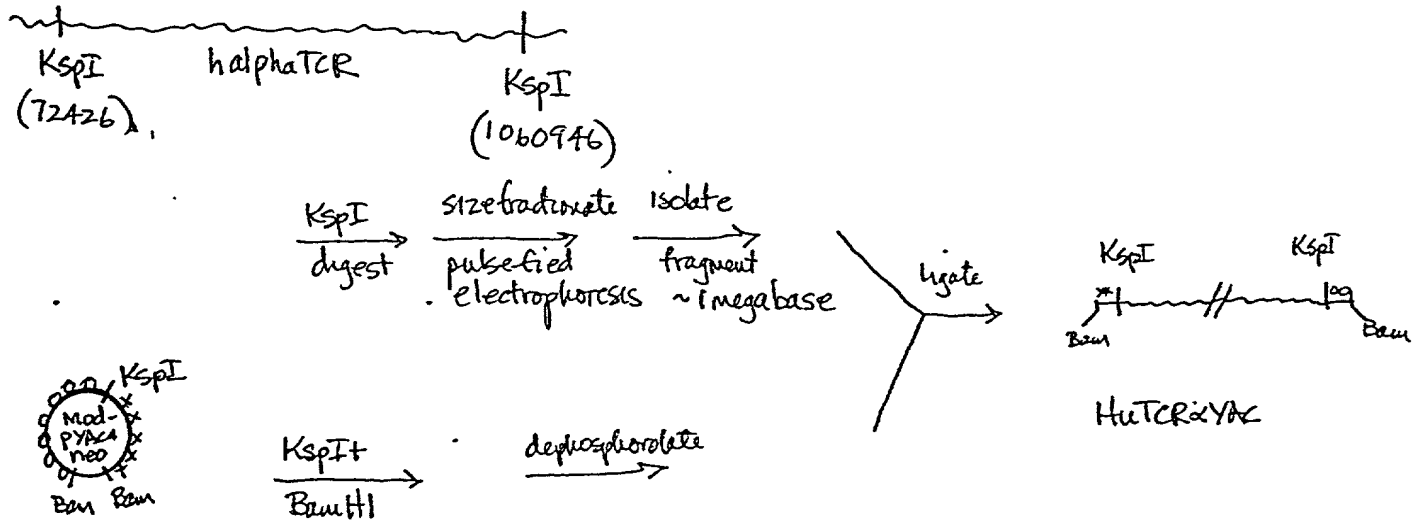
FIG 3



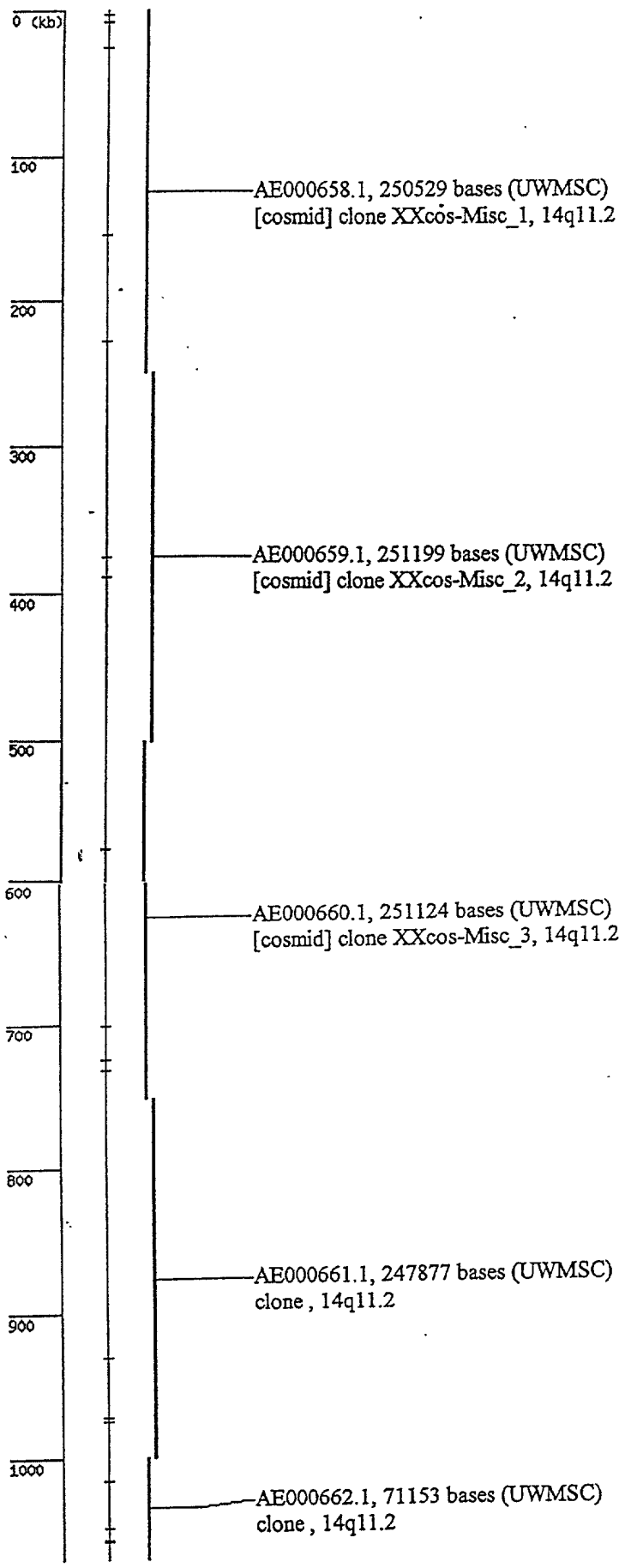
FOOTSHOT

Figure 4. OVERVIEW

human chromosomal DNA
Chromosome 14 locus 14q11.2

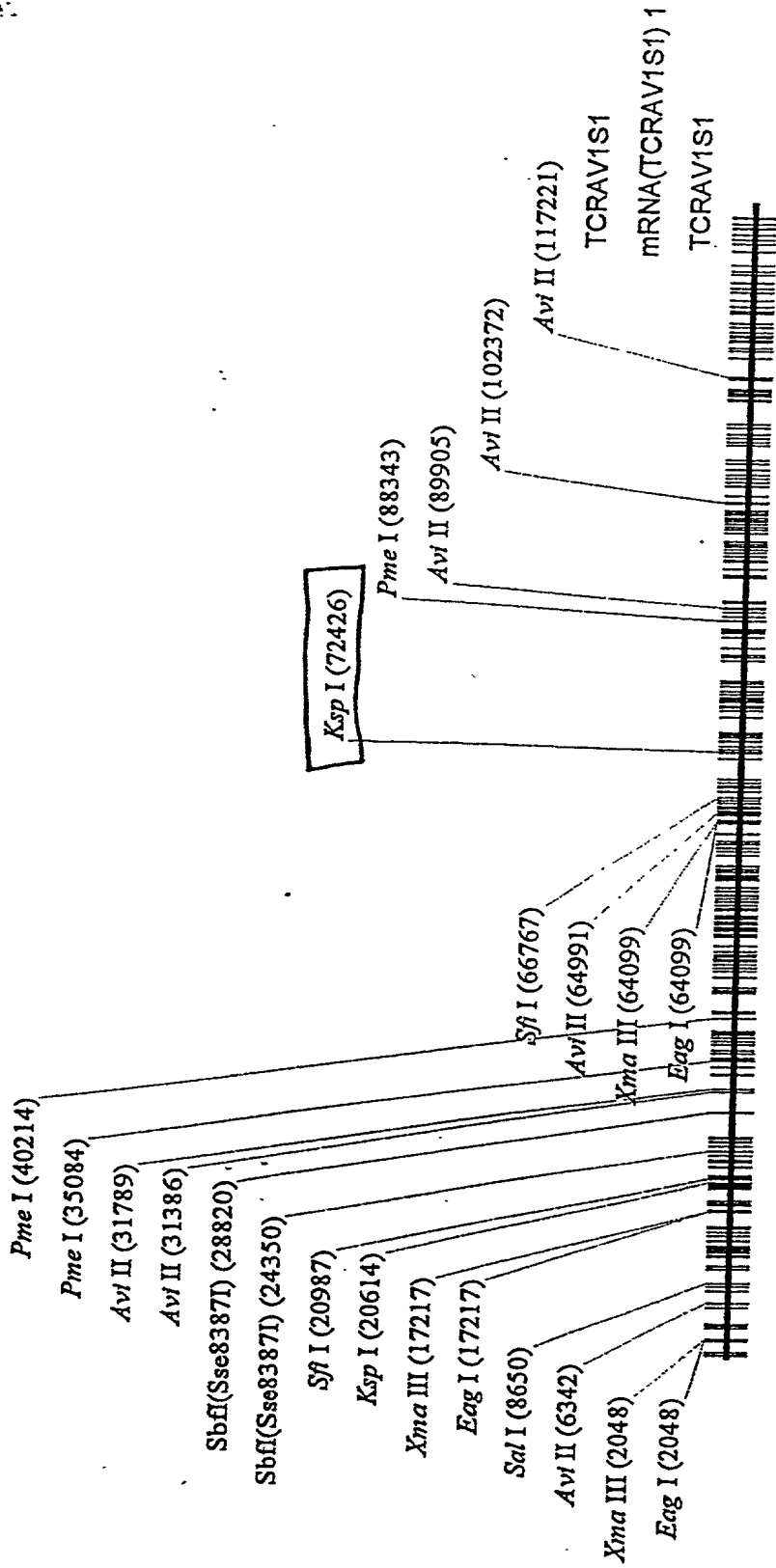


FOOTNOTES

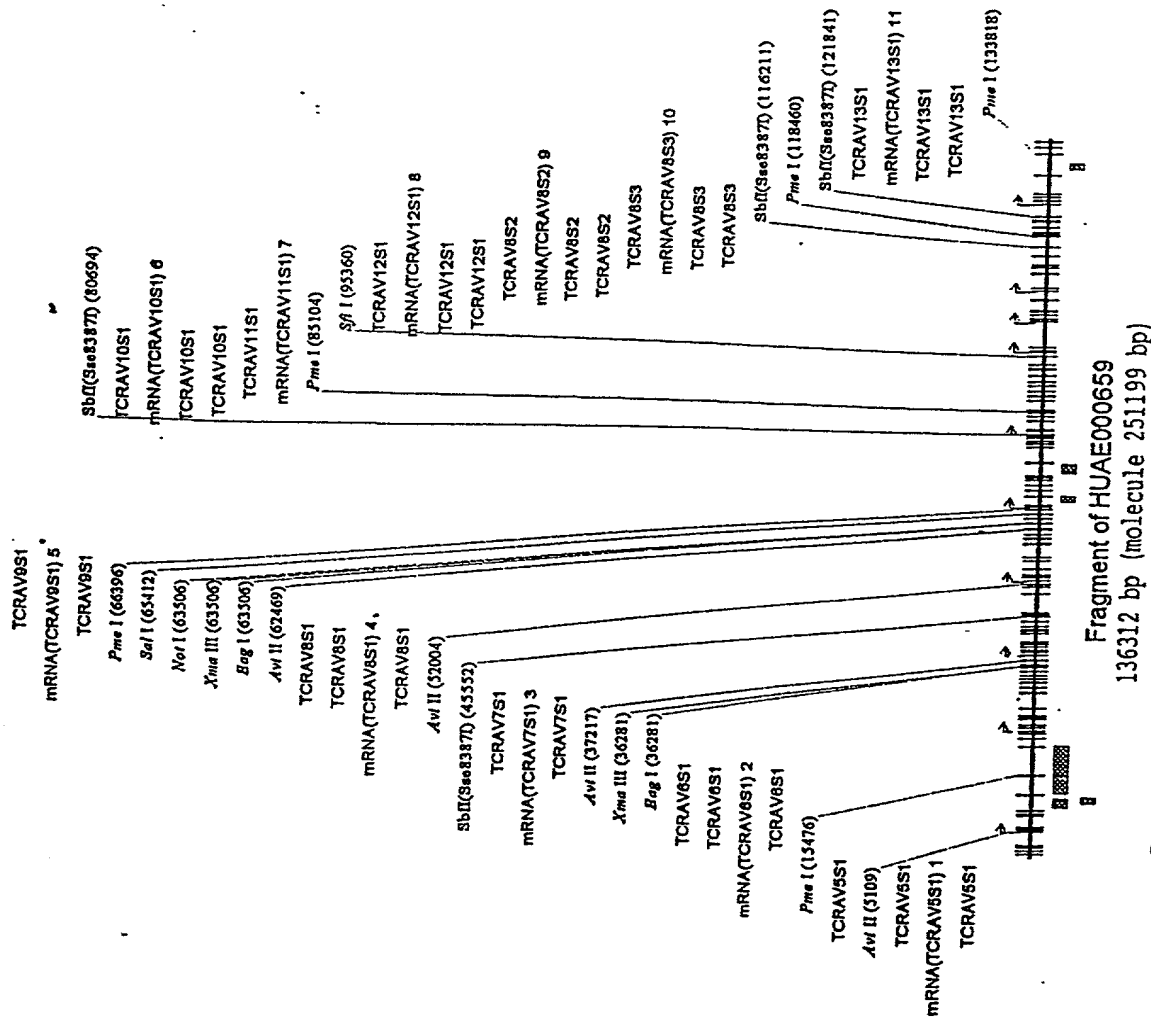


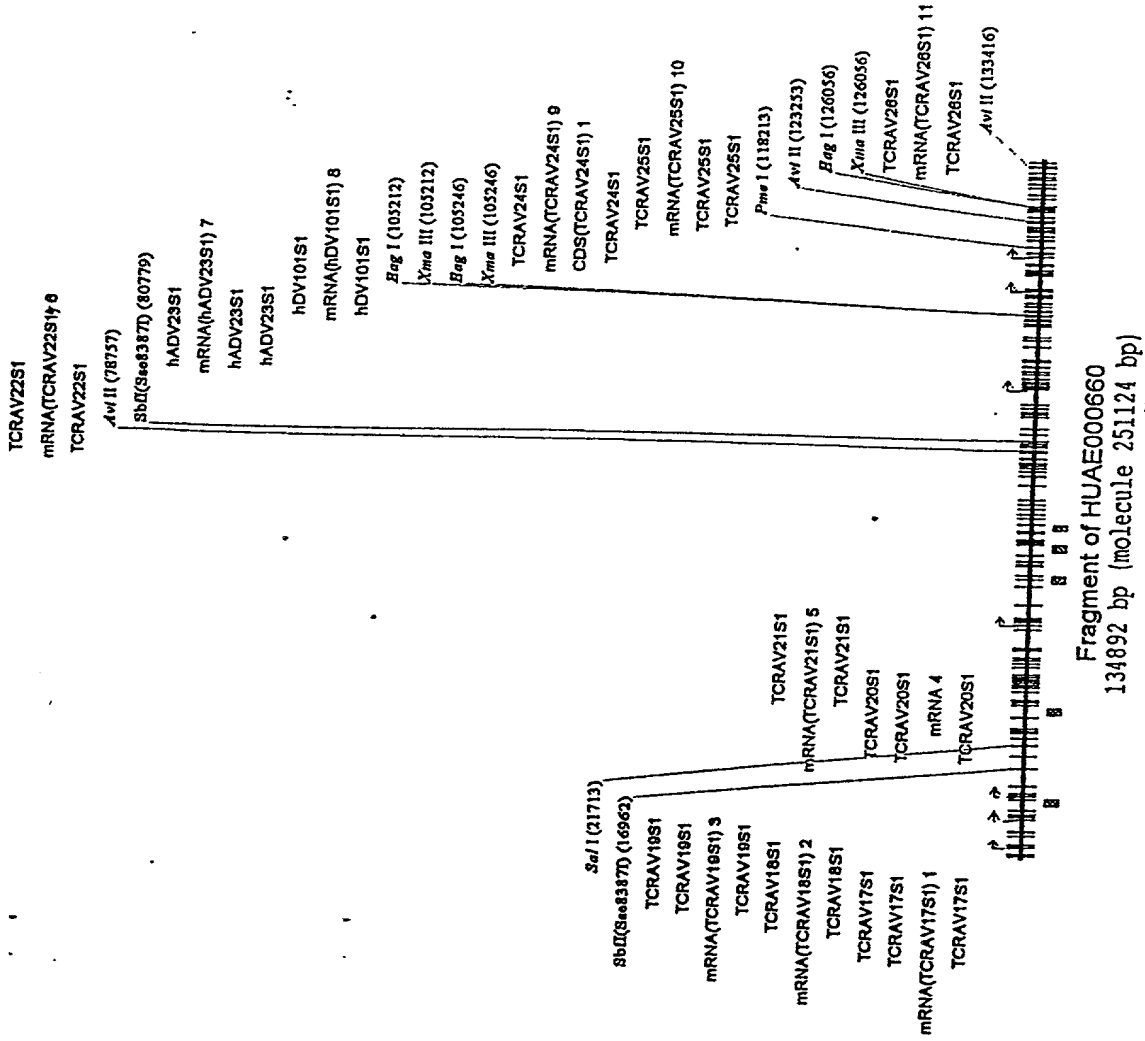
FOOT SHOOT

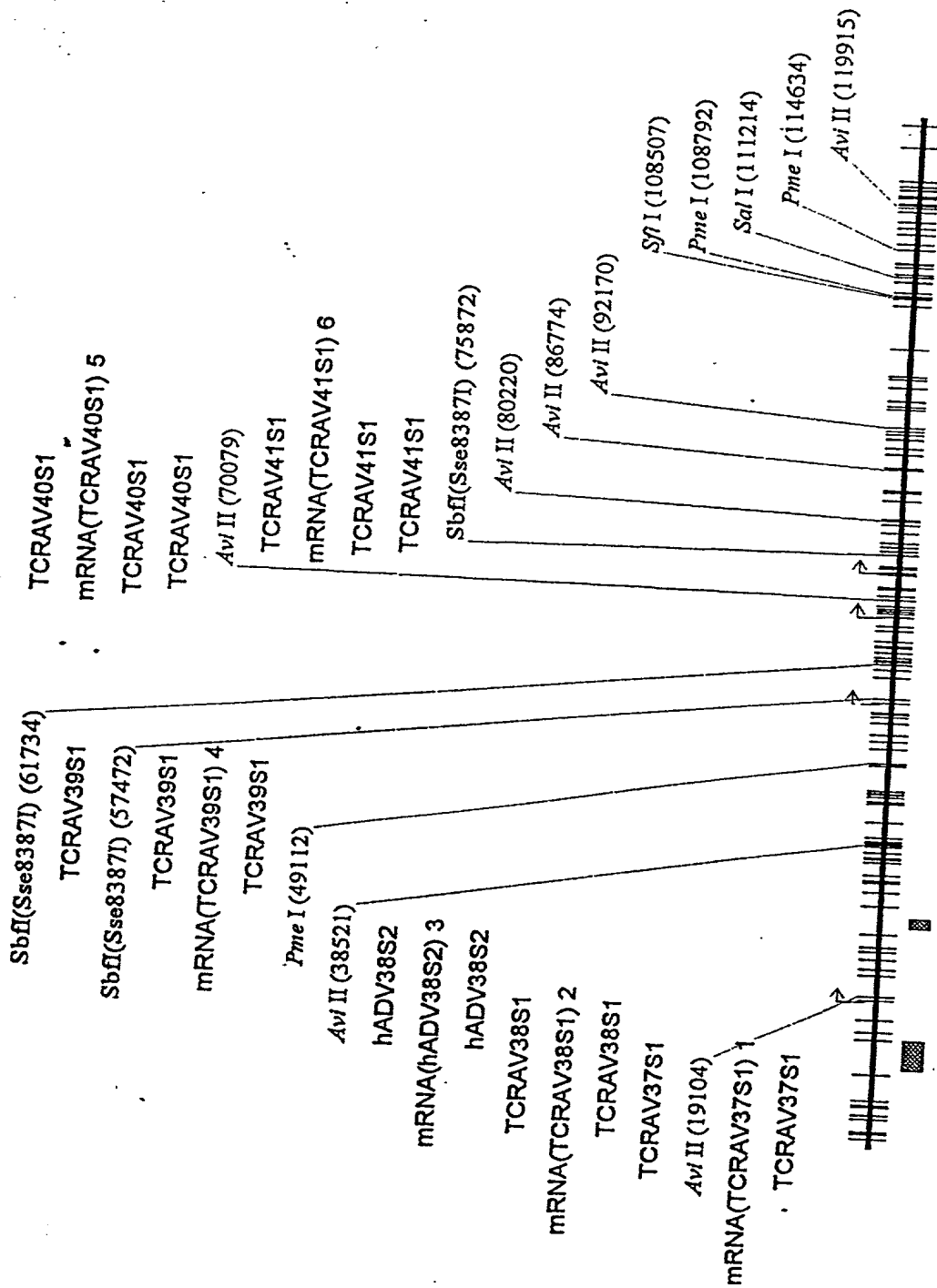
Fig. 4A



Fragment of HUAE000658
137784 bp (molecule 250529 bp)







Fragment of HUAE000661
131332 bp (molecule 247877 bp)

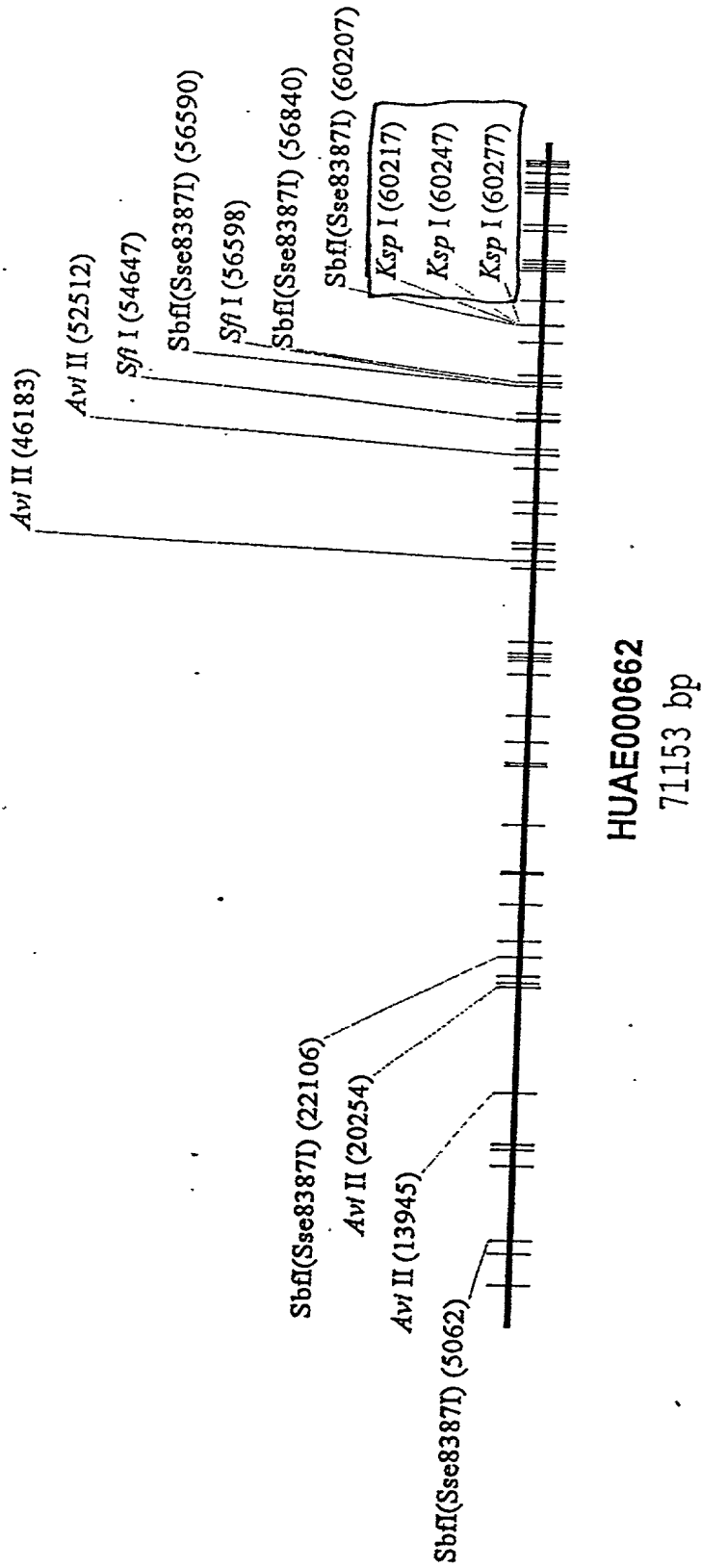
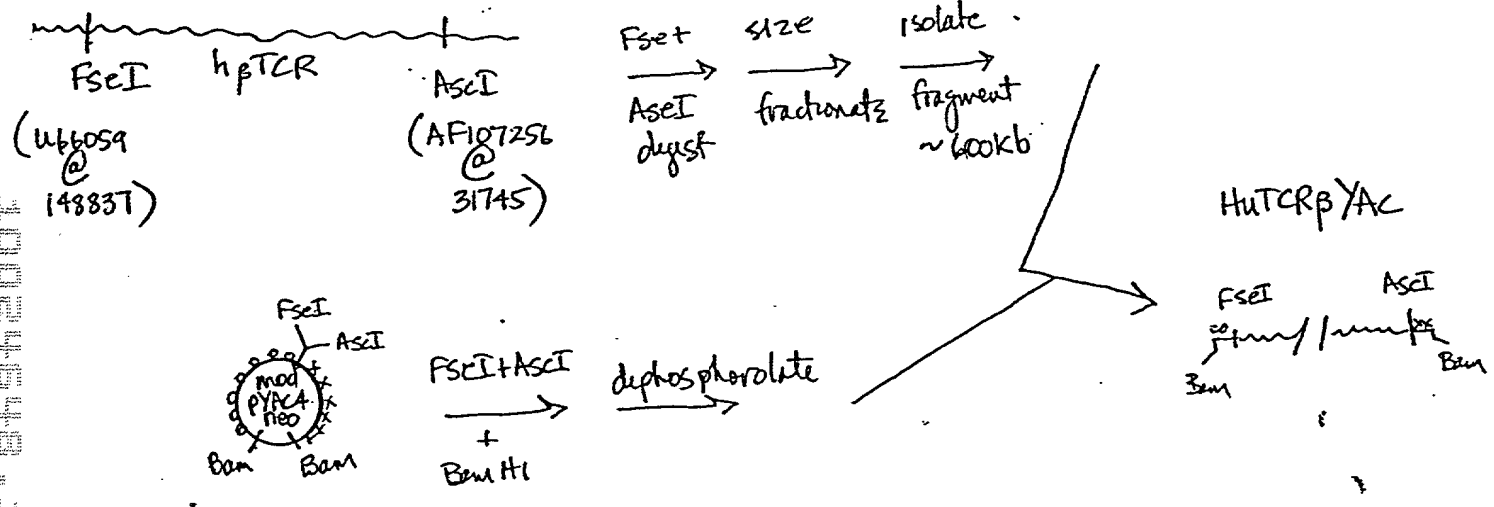


Figure 5 overview

human chromosomal DNA
Chromosome 7 locus 7q35



T05T07-0930001

Markers
Components

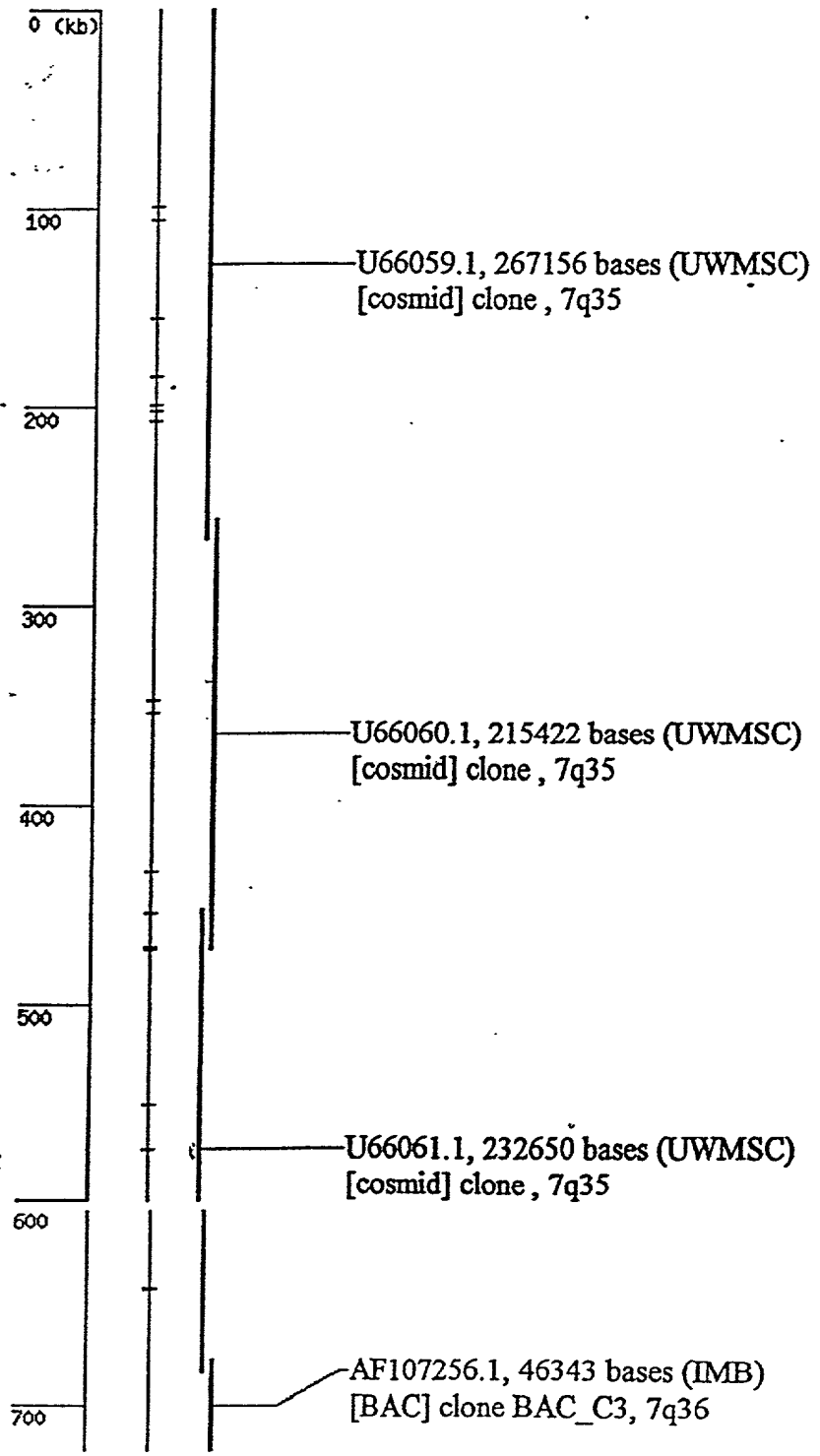
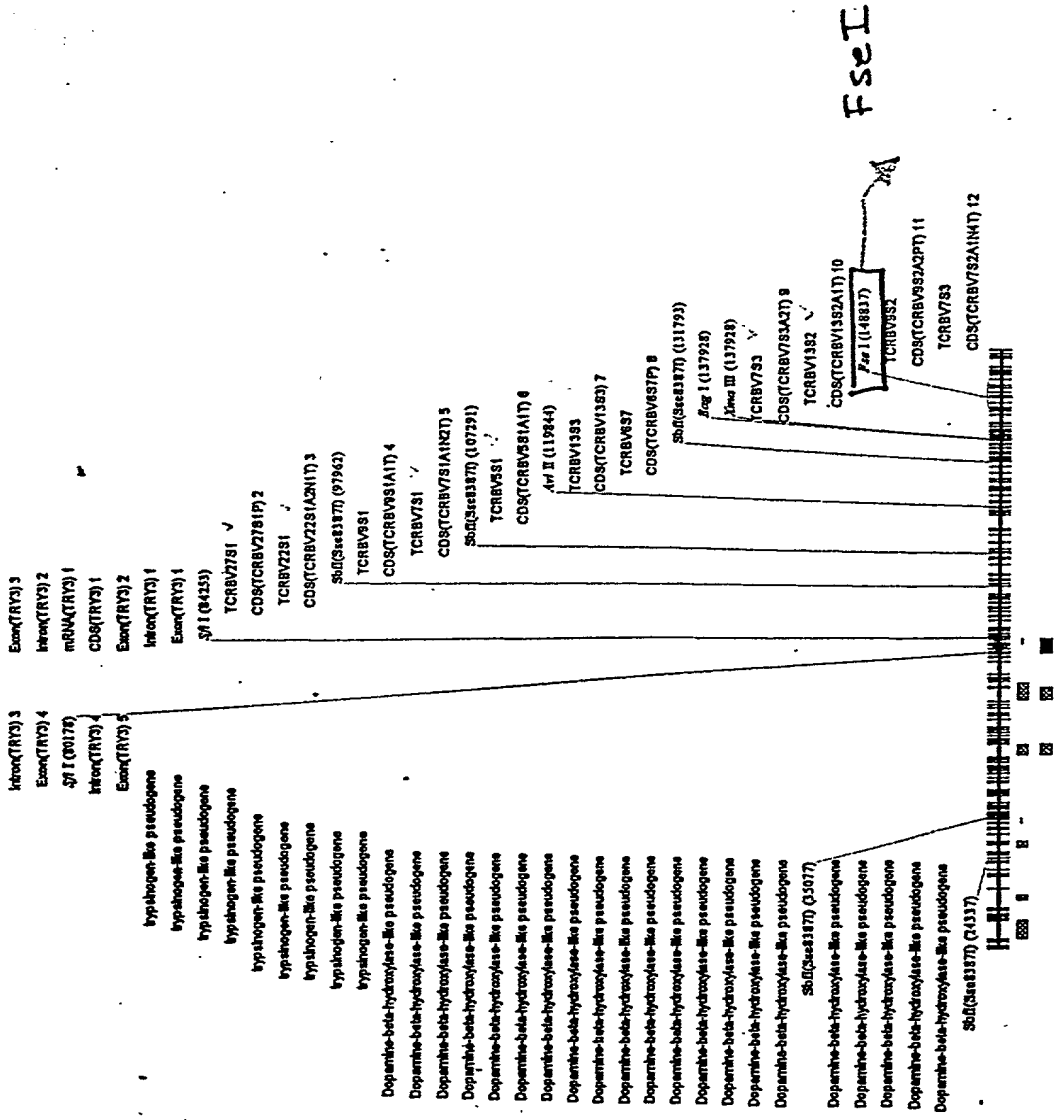
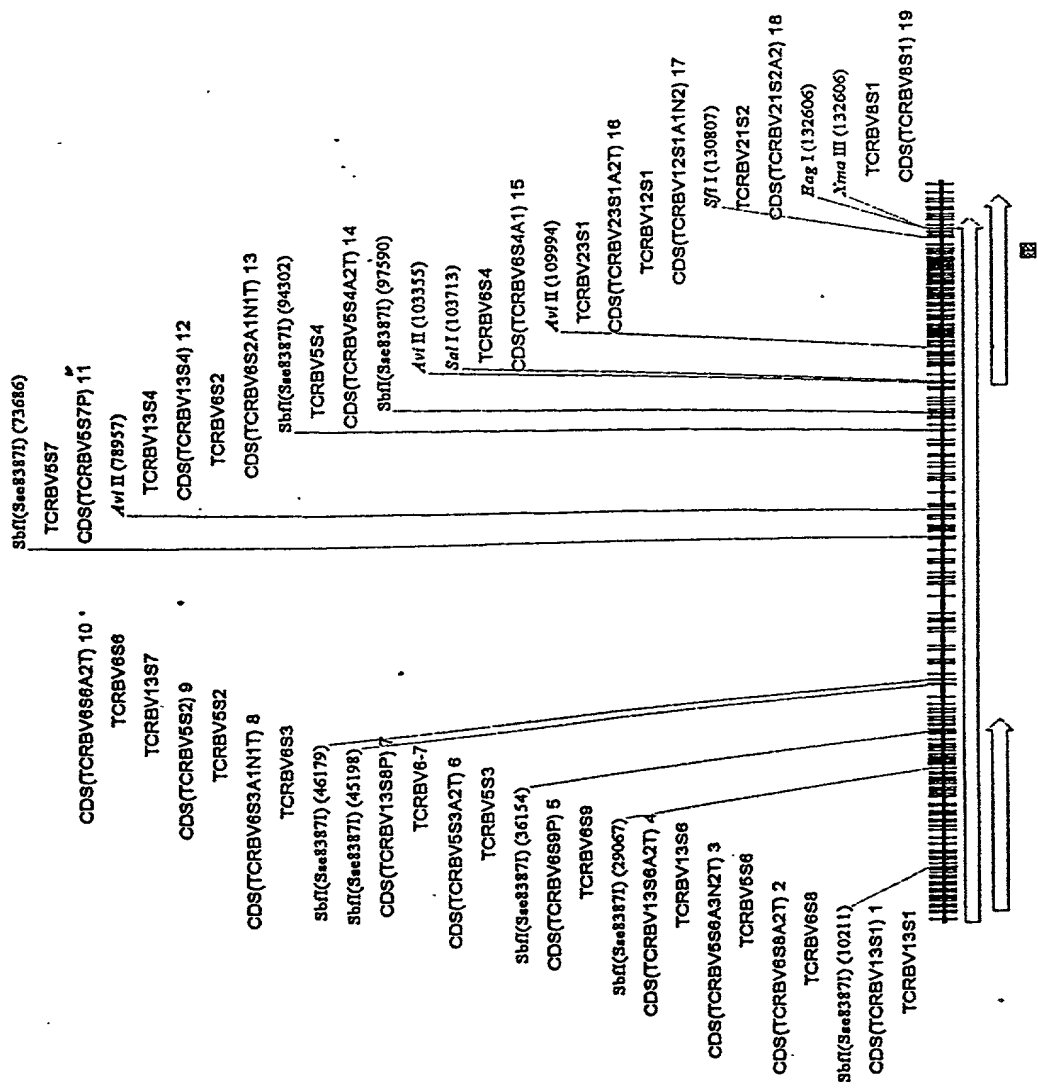


Fig 5A

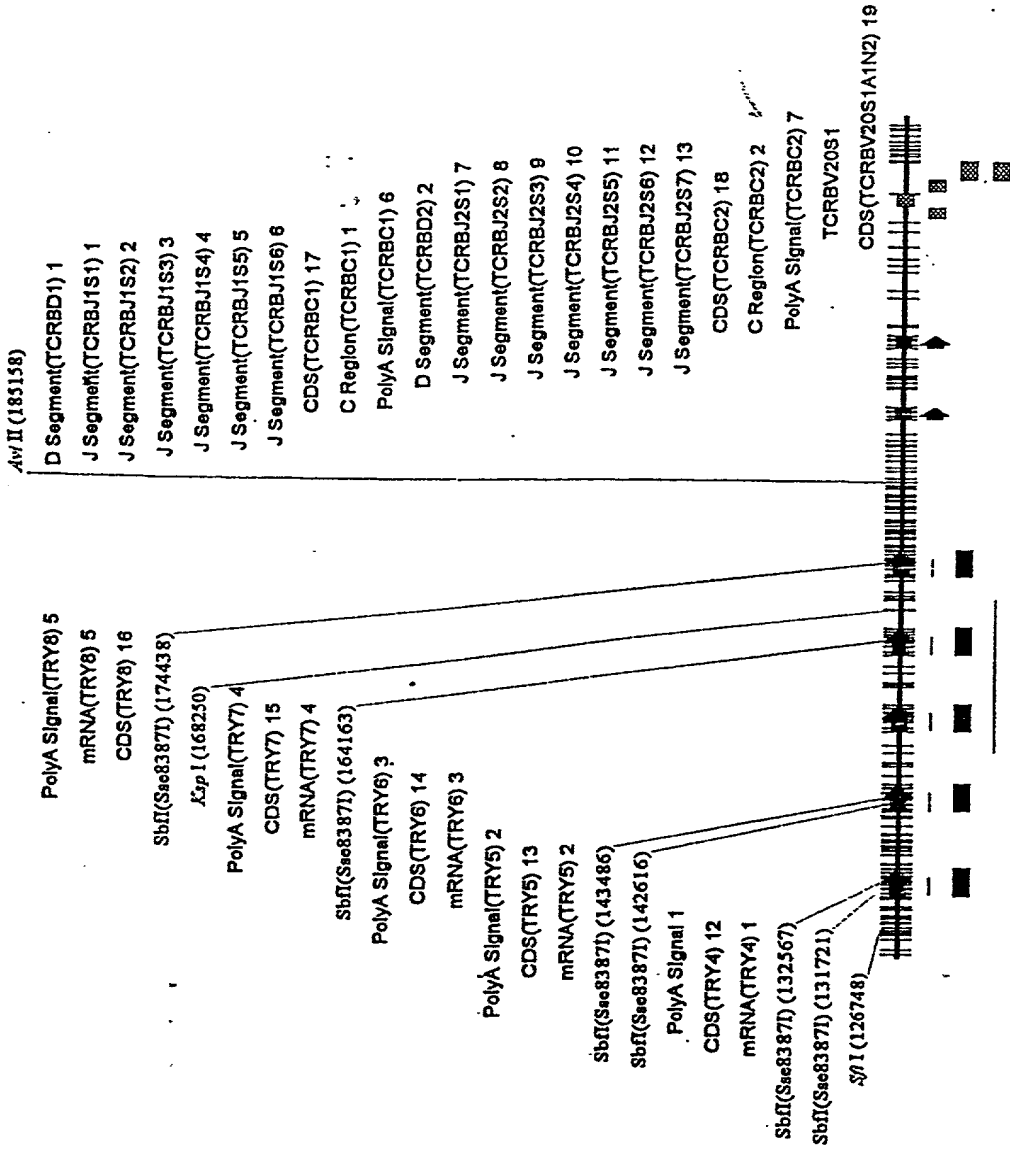
FOOTNOTES



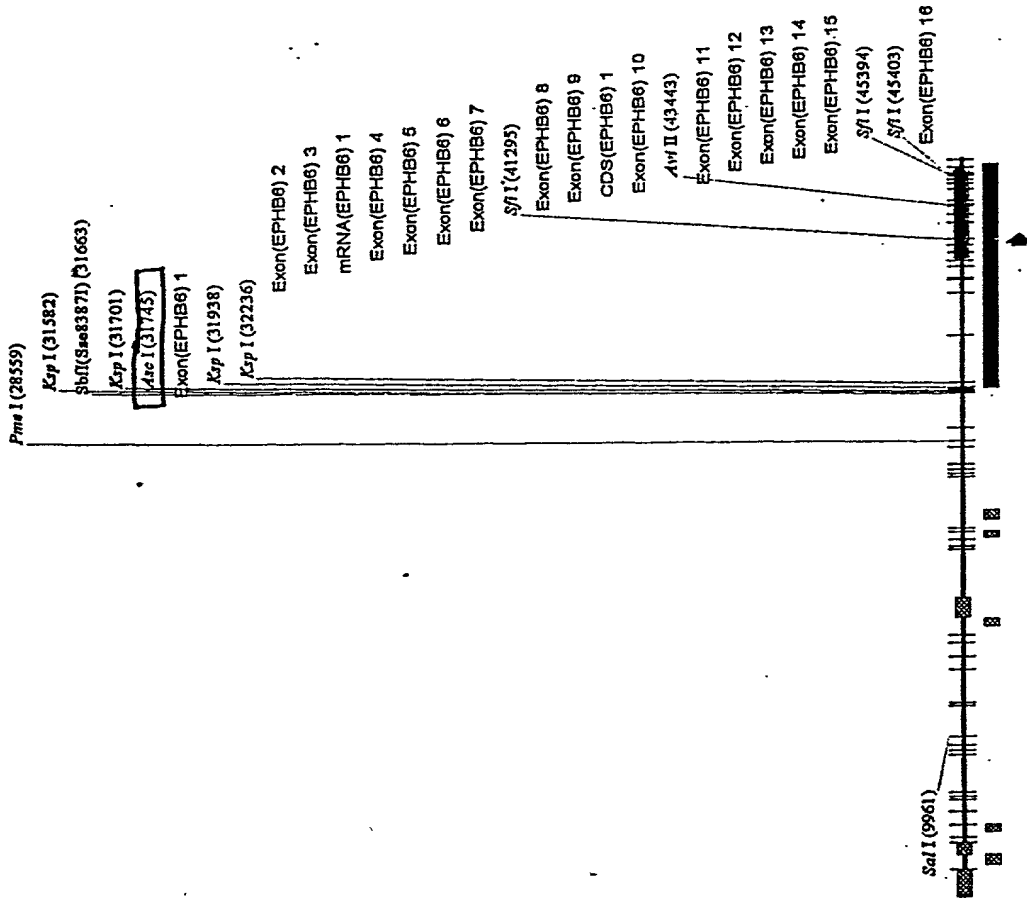
Fragment of U66059
161934 bp (molecule 267156 bp)



Fragment of U66080
141491 bp (molecule 215422 bp)



Fragment of U66061
109812 bp (molecule 232650 bp)



AF107266
46343 bp

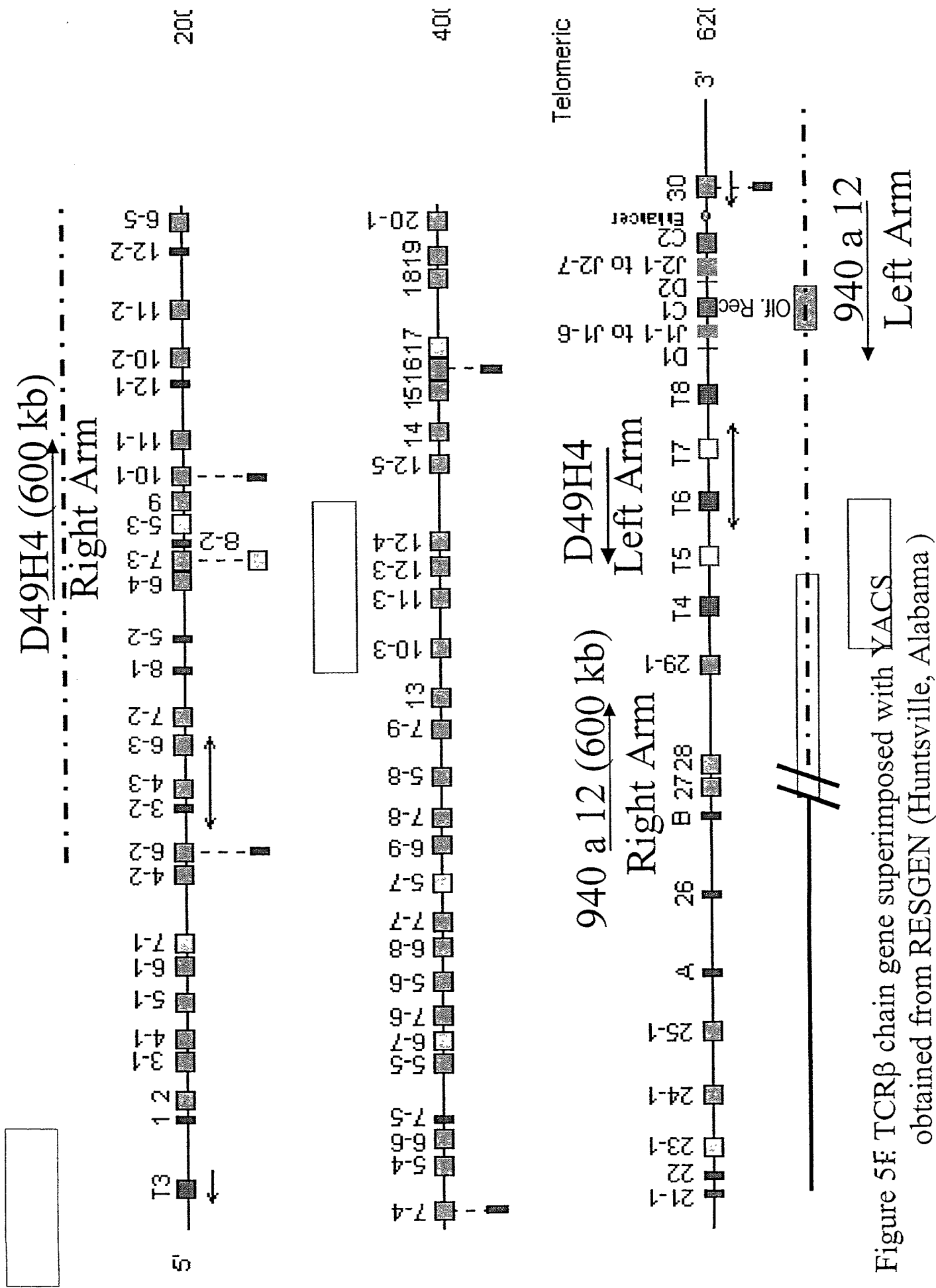


Figure 5F. TCRβ chain gene superimposed with YACs obtained from RESGEN (Huntsville, Alabama)

huTCR β YAC

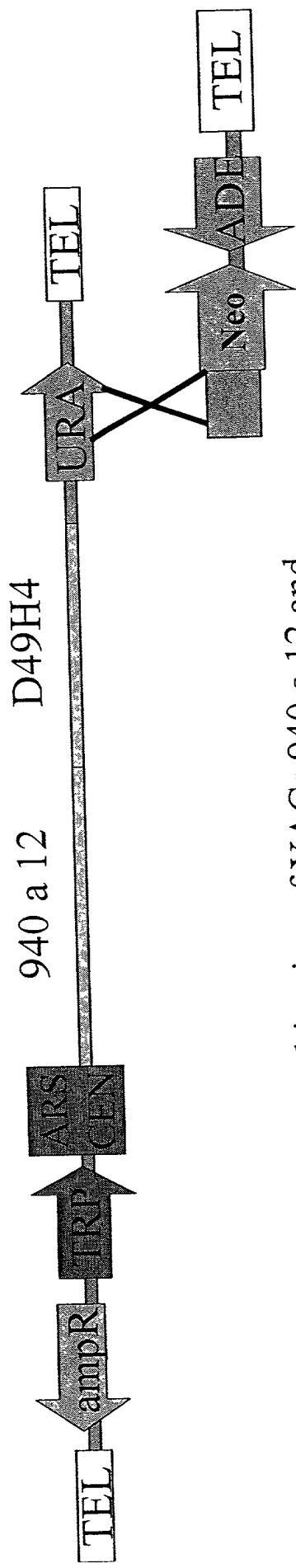
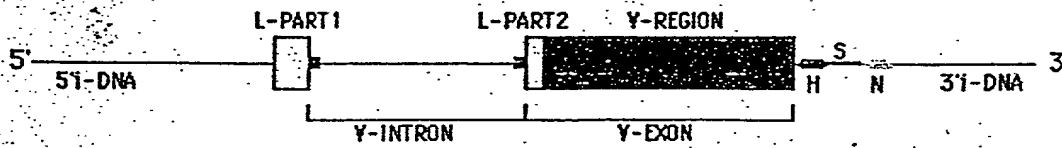


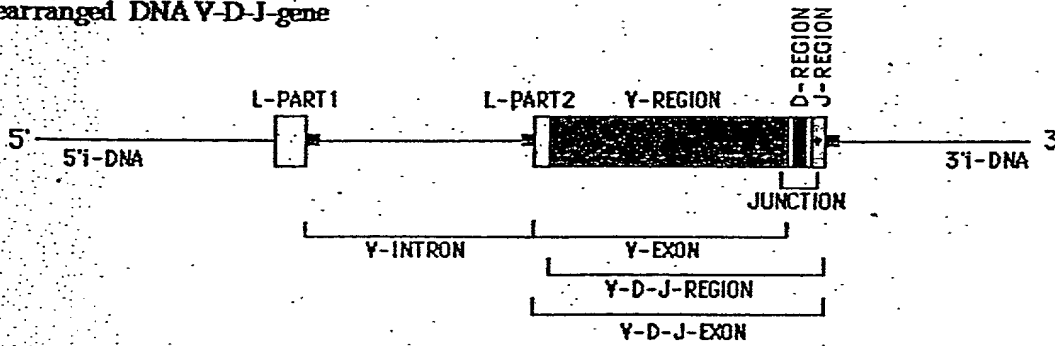
Figure 5G: Following recombination of YACs 940 a 12 and D49H4 to create the HuTCR β YAC, the right arm of the construct can be retrofitted with vectors containing regulatory sequences and/or mammalian selection cassettes.

Modification vector

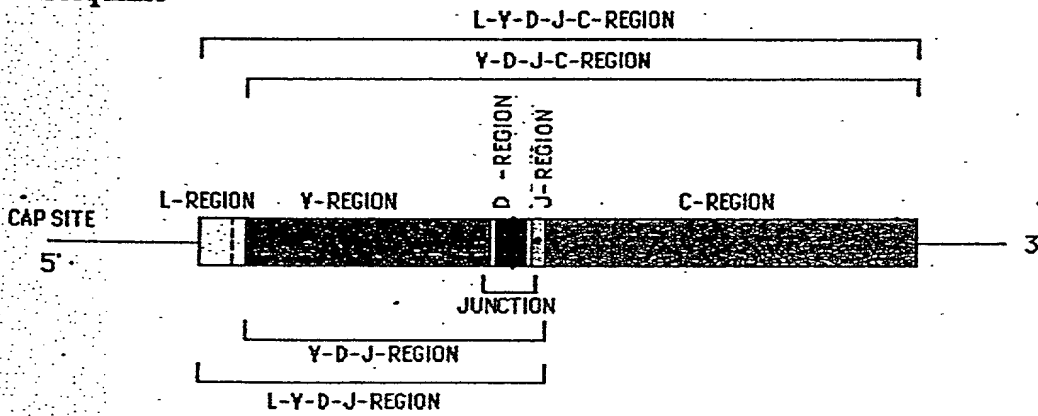
Germline Y-Gene



Rearranged DNA V-D-J-gene



cDNA sequence



Legend

- Acceptor splice or donor splice
- H: heptamer
- N: nonamer
- S: spacer
- J-TRP or J-PHE
- || N regions

T06707-24342001